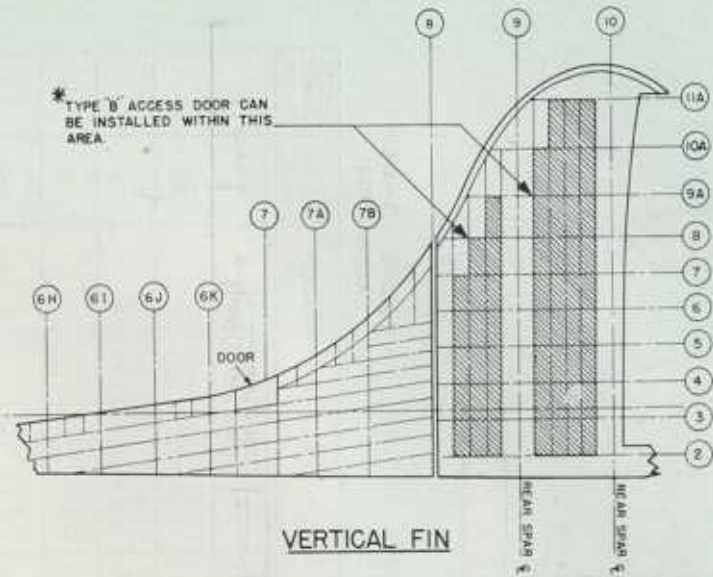
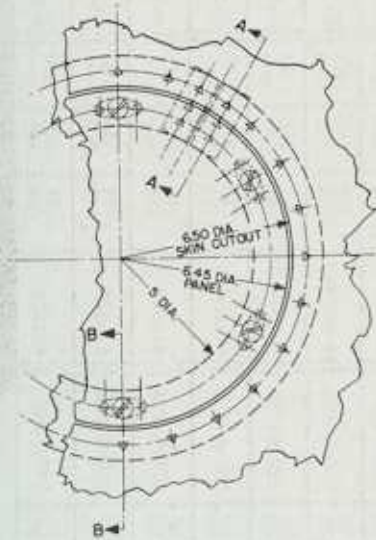


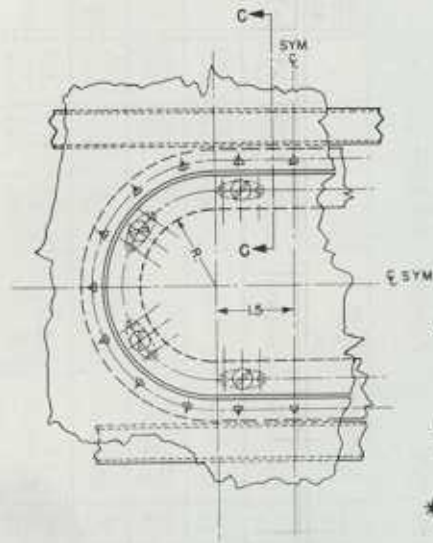
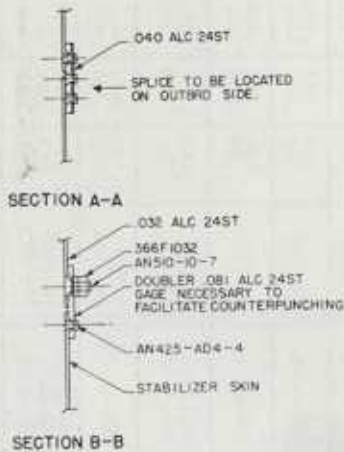
STABILIZER



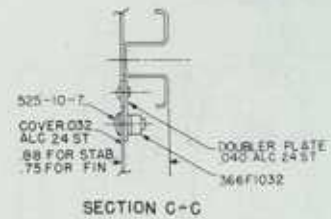
VERTICAL FIN



ACCESS DOOR TYPE "A"



ACCESS DOOR TYPE "B"



SECTION C-C

NOTES

- REF 15-7021 & DIAGRAM FIN & RUDDER
- 15-7023 FIN ASSEMBLY
- 15-7022 & DIAGRAM-STABILIZER & ELEV.
- 15-7025 STABILIZER ASSY.
- 15-7027 FIN INST-DORSAL
- USE TYPE "B" ACCESS DOOR IN DORSAL.
- ✦ $\frac{1}{8}$ DIA ALYST SKIN RIVET
- EDGE MARGIN = $\frac{25}{32}$ MIN.
- *IMPORTANT: SEE SHEET II FOR FURTHER NOTES RESTRICTING LOCATION OF DOORS

Figure 47A—Airfoil Maintenance Diagram—Empennage